



**Boston
Children's
Hospital**
Until every child is well



HARVARD MEDICAL SCHOOL
TEACHING HOSPITAL

15TH Annual Sport-Related

Concussion & Spine Injury Conference

Friday, May 11, 2018 | The Joseph B. Martin Conference Center, Boston, MA

Early bird rates end 3/31/2018 | Register now
bostonchildrens.org/concussion2018



About the course

The Sport-Related Concussion and Spine Injury Conference returns for its 15th year on Friday, May 11, 2018. Honored guests and national experts from Boston Children's Hospital Brain Injury Center and Harvard Medical School will present key features in the diagnosis and management of the full spectrum of concussion, traumatic brain and spinal cord injury, with an emphasis on safely returning athletes to school and sports.

The one day course will focus on the basic science and clinical management of sport-related concussion (SRC) and spinal cord injury. Topics will address initial clinical and radiographic evaluation, acute and chronic treatment, long-term implications of head or spine injury, and more.

The interactive learning format of the course will engage attendees through lectures, panel presentations, small group discussions, and Q&A sessions. Hands-on workshops will address relevant, practical concerns that are specific to clinicians, nurses, athletic trainers, physical therapists, coaches, and school personnel who work with brain or spine injured patients in any capacity.

Lectures Include:

- *The Basics of Concussion: Biomechanics and Pathophysiology*
- *During Life Diagnosis of CTE*
- *Risk of Early Exposure to Contact Sports*
- *Mechanisms and Management of Spine Injuries in Sports and more*

Target audience

- › neurologists
- › neurosurgeons
- › pediatricians
- › internists
- › sports medicine specialists
- › athletic trainers
- › physical therapists
- › nurse practitioners
- › physician assistants
- › nurses
- › clinical psychologists
- › neuropsychologists
- › coaches, athletic directors and other school personnel
- › athletes and families

Course Directors

- Mark R. Proctor, MD
- William Meehan III, MD
- Alex M. Taylor, PsyD
- Rebecca Stevens, CPNP

Inquiries

For questions or assistance with registration, please contact the CME department via email: cmepartment@childrens.harvard.edu

Objectives

Upon completion of the course, participants will be able to:

- › assess the problems of sport-related concussion and spine injuries and develop strategies to diagnose and treat them effectively
- › determine when to safely return an athlete to play in accordance with best practice and legal requirements
- › evaluate athletic injuries and determine when to refer your patients to an expert for a higher level of care

Accreditation

In support of improving patient care, Boston Children's Hospital is accredited by the American Nurses Credentialing Center (ANCC), the Accreditation Council for Pharmacy Education (ACPE), and the Accreditation Council for Continuing Medical Education (ACCME) to provide continuing medical education for the healthcare team.

Physicians

Boston Children's Hospital designates this live activity for a maximum of 7 *AMA PRA Category 1 Credits™*. Physicians should claim only credit commensurate with the extent of their participation in this activity.

AAPA accepts AMA category 1 credit for the PRA from organizations accredited by ACCME.

Nurses

Boston Children's Hospital designates this activity for 7 contact hours for nurses. Nurses should only claim credit commensurate with the extent of their participation in the activity.

Physical Therapists

The APTA of MA approves "The 15th Annual Sports Related Concussion and Spine Injury Conference" for 7.5 Continuing Education Hours

Athletic Trainer Accreditation Pending

Registration and refund policies

Registration by credit card can be made by visiting bostonchildrens.org/concussion2018. Registration by check (draft on a United States bank): please make payable to Boston Children's Hospital and contact the CME Department at cmepartment@childrens.harvard.edu to discuss payment. Telephone or fax registration is not accepted. Registration with cash payment is not permitted. Upon receipt of your paid registration, an email confirmation from the Boston Children's office will be sent to you. Be sure to include an email address that you check frequently. Your email address is used for critical information, including registration confirmation, evaluation and certificate.

Fifty-percent (50%) refunds will be issued for all cancellations received prior to the start of the course. Refund requests must be received by postal mail, email or telephone. "No shows" are subject to the full course fee, and no refunds will be issued once the conference has started.

Disclosure policy

Boston Children's Hospital adheres to all ACCME Essential Areas, Standards, and Policies. It is Boston Children's policy that those who have influenced the content of a CME activity (e.g. planners, faculty, authors, reviewers and others) disclose all relevant financial relationships with commercial entities so that Boston Children's may identify and resolve any conflicts of interest prior to the activity. These disclosures will be provided in the activity materials along with disclosure of any commercial support received for the activity. Additionally, faculty members have been instructed to disclose any limitations of data and unlabeled or investigational uses of products during their presentations.

Attendees who register on or before March 31, 2018 will receive a 25% early bird discount registration rate. Past attendees of the course are eligible to sign up with a 10% discount off of the full price fee. Groups of three or more who wish to attend the course are eligible for a group rate.*

Registration fees	Early Bird*	Regular rate**	Past Attendee rate
Physicians	\$206.25	\$275	\$247.50
Nurses	\$142.50	\$190	\$171
Trainees/Allied Health Professionals	\$157.50	\$210	\$189
Athletic Trainers/Physical Therapists	\$157.50	\$210	\$189
Coaches/Athletic Directors/Athletes/Families	\$118.12	\$157	\$141.75
Groups of 3 or more		\$155	

* Early Bird ends 3/31/18; ** Regular Fees after 3/31/18



JOINTLY ACCREDITED PROVIDER™
INTERPROFESSIONAL CONTINUING EDUCATION



Schedule of events: *Friday, May 11, 2018*

8–8:30 a.m.	The Basics of Concussion: Biomechanics and Pathophysiology William Meehan III, MD
8:30–9 a.m.	Medical Management of Concussion Michael O'Brien, MD
9–9:30 a.m.	Neuropsychology of Prolonged Recovery and Its Impact on School Alex Taylor, PsyD
9:30–9:45 a.m.	Panel Q & A
9:45–10 a.m.	BREAK
10–10:30 a.m.	During Life Diagnosis of CTE Julian E. Bailes, MD
10:30–11 a.m.	Balanced Review of CTE Literature Alan Carson, MD
11–11:30 a.m.	Historical Perspectives: Evolution of Concussion Robert Cantu, MD
11:30 a.m.–noon	Animal Models and Chronic Traumatic Encephalopathy (CTE) Rebekah Mannix, MD, MPH
12:15–1 p.m.	LUNCH
1–1:15 p.m.	Special Guest Buddy Teevens, Robert L. Blackman Head Football Coach Dartmouth College
1:15–1:45 p.m.	Effect of Concussion on Gait and Balance David R. Howell, PhD
1:45–2:15 p.m.	Spine Injuries in Sports–Mechanisms William Meehan III, MD
2:15–2:30 p.m.	Spine Injuries in Sports–Management Mark Proctor, MD
2:30–2:45 p.m.	MCMC Diane Sartanowicz, MS, LAT, ATC

2:45–3 p.m.

BREAK

3–4:30 p.m.

45 MIN BREAKOUT WORKSHOPS (choose 2/4)

3–3:45 p.m.



Vestibular Assessment and Management of Concussion

Jacob Brodsky, MD, FAAP
Lenore Herget, DPT

3–3:45 p.m.



Ocular Assessment and Management of Concussion

Aparna Raghuram, OD, PhD

3:45–4:30 p.m.



Emergency Response & Transport

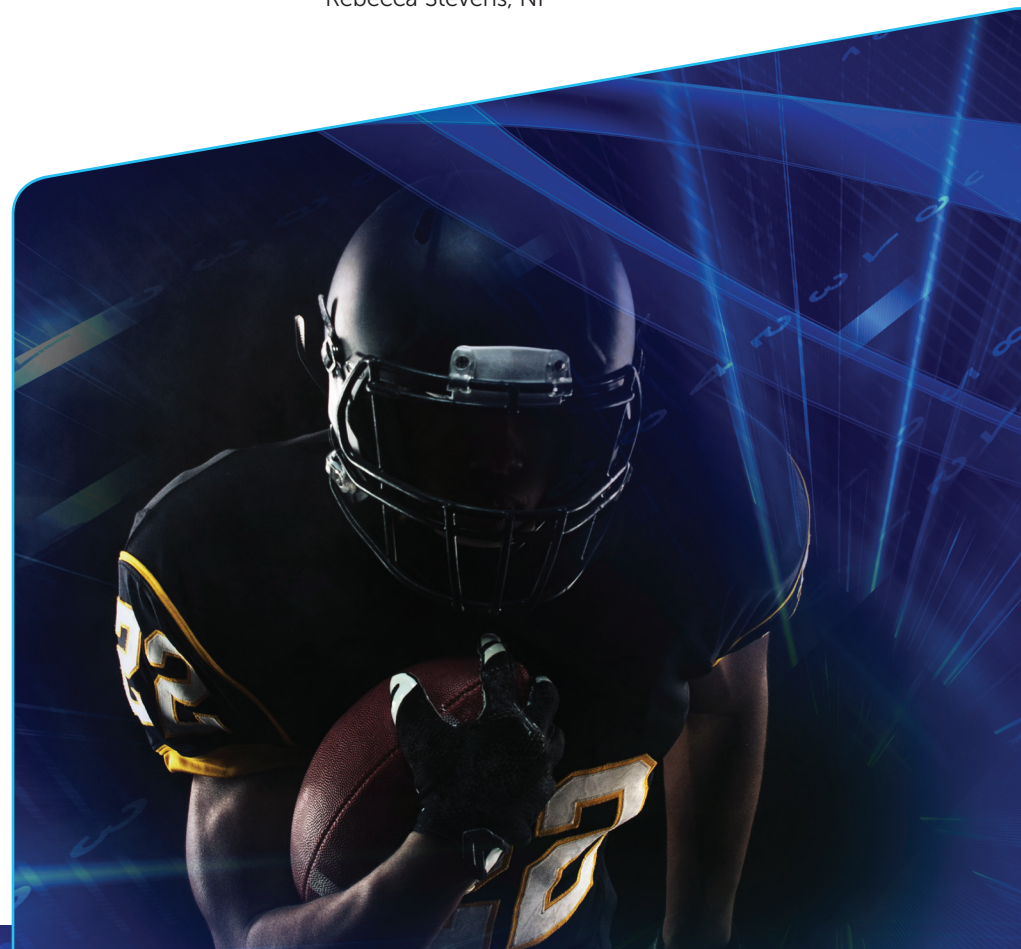
Steve Clark, ATC, PT
Pierre D'Hemecourt, MD

3:45–4:30 p.m.



Multidisciplinary Approach to Complicated Recovery from Concussion

Rebecca Stevens, NP





Boston Children's Hospital
Until every child is well™



HARVARD MEDICAL SCHOOL
TEACHING HOSPITAL

Department of Continuing Medical Education
300 Longwood Avenue, LM 7, Boston, MA 02115

15TH Annual Sport-Related
**Concussion & Spine Injury
Conference**

Friday, May 11, 2018



Early bird rates end 3/31/2018 | Register now
bostonchildrens.org/concussion2018